

MARSH LANDING TOWNHOUSE CONDOMINIUM VII

SURVEY CERTIFICATION

We hereby certify pursuant to section 718.104(4)(e) F.S. as amended that the construction of Building 25, and the common element facilities serving Building 25 including, but not limited to, landscaping, utility services and access to the unit are substantially complete; so that such material together with the provisions of the Declaration of Condominium of Marsh Landing Townhouse Condominium VII describing the condominium property is an accurate representation of the location and dimensions of the improvements and that the identification, location and dimensions of the common elements and of each home can be determined from these materials.

INK ENGINEERING, INC. (LB 856)
3660 Central Avenue, Suite 8
Fort Myers, Florida 33901

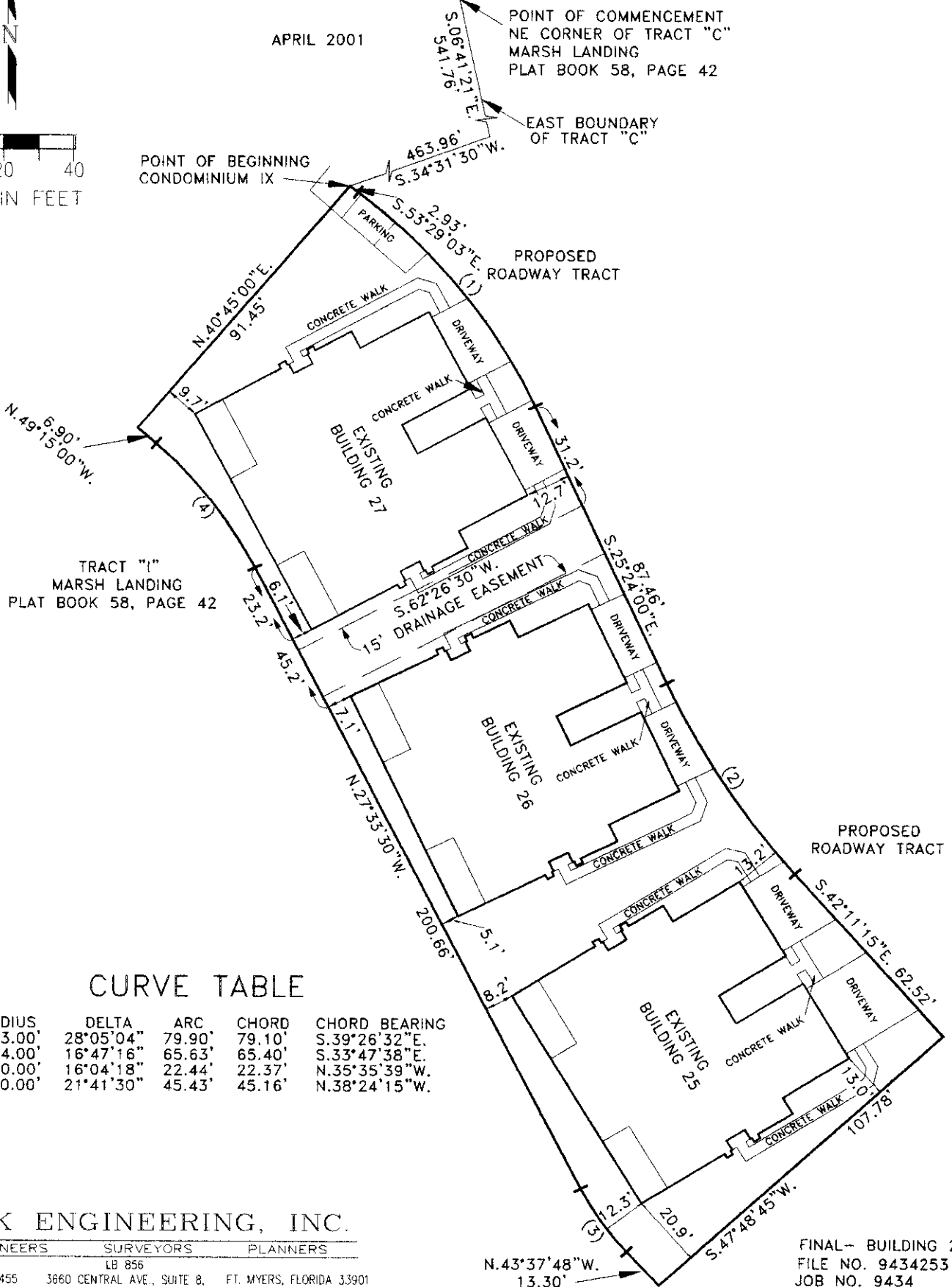
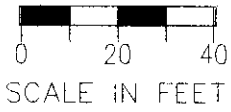


Gordon D. Meiers, P.E., P.S.M.
Professional Land Surveyor #2858
State of Florida

A/26/01

MARSH LANDING TOWNHOUSE CONDOMINIUM VIII

APRIL 2001



TRACT "I"
MARSH LANDING
PLAT BOOK 58, PAGE 42

CURVE TABLE

NO.	RADIUS	DELTA	ARC	CHORD	CHORD BEARING
1	163.00'	28°05'04"	79.90'	79.10'	S.39°26'32"E.
2	224.00'	16°47'16"	65.63'	65.40'	S.33°47'38"E.
3	80.00'	16°04'18"	22.44'	22.37'	N.35°35'39"W.
4	120.00'	21°41'30"	45.43'	45.16'	N.38°24'15"W.

DR BK 03401 PG 3403

INK ENGINEERING, INC.

ENGINEERS SURVEYORS PLANNERS

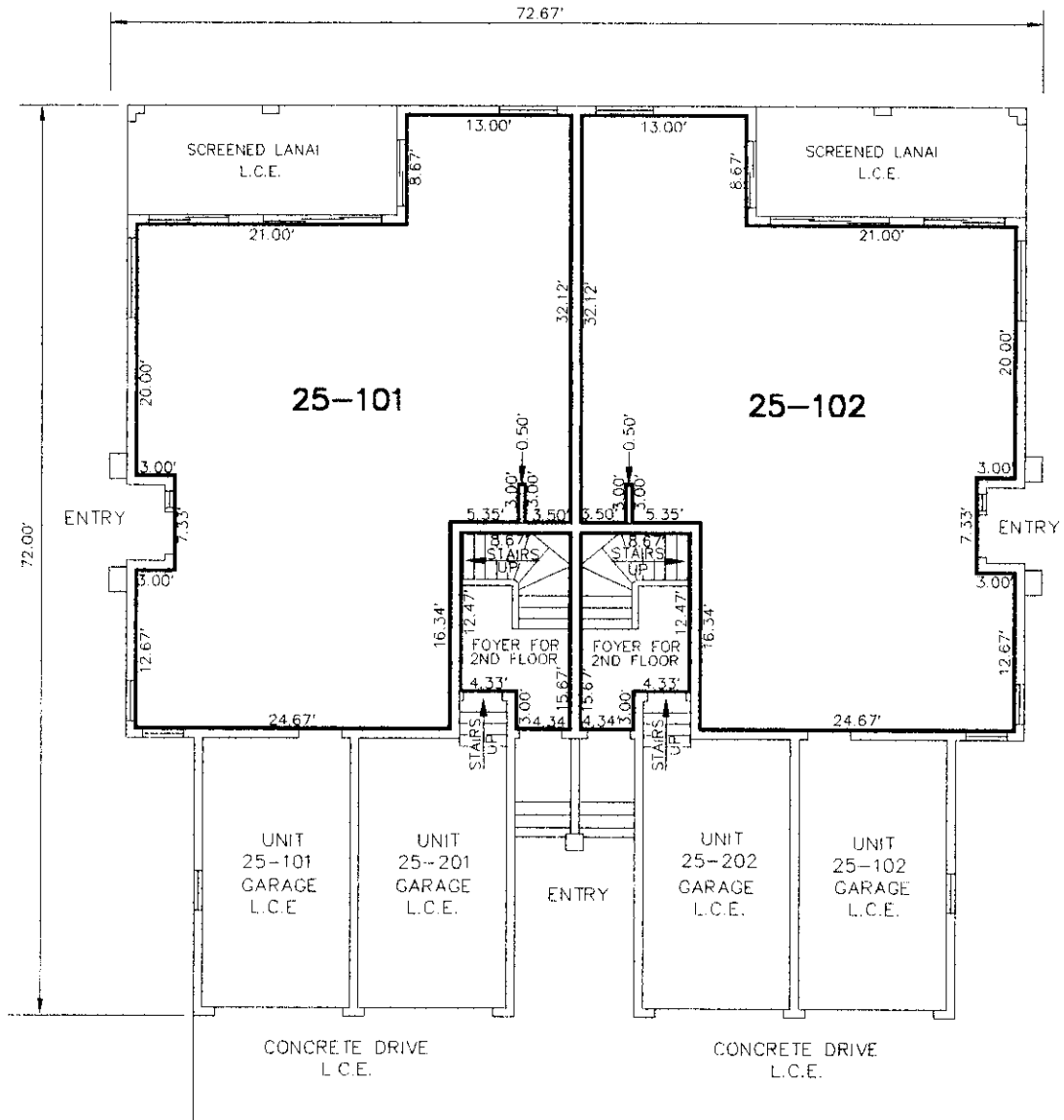
LB 856

(941) 931-0455 3660 CENTRAL AVE., SUITE 8, FT. MYERS, FLORIDA 33901

FINAL - BUILDING 25
FILE NO. 9434253
JOB NO. 9434

MARSH LANDING TOWNHOUSE CONDOMINIUM VIII

APRIL 2001



BUILDING 25 FIRST FLOOR

	UNIT 25-101	UNIT 25-101 GARAGE	UNIT 25-102	UNIT 25-102 GARAGE	UNIT 25-201 GARAGE	UNIT 25-202 GARAGE	UNIT 25-201 FOYER	UNIT 25-202 FOYER
UPPER LIMITS	24.83'	24.83'	24.83'	24.83'	24.83'	24.83'	35.00'	35.00'
LOWER LIMITS	15.50'	15.00'	15.50'	15.00'	15.00'	15.00'	18.50'	18.50'

INK ENGINEERING, INC.

ENGINEERS SURVEYORS PLANNERS

LB 856

(941) 931-0455 3660 CENTRAL AVE., SUITE 8, FT. MYERS, FLORIDA 33901

OR BK 03A01 PG 3A04

FINAL- BUILDING 25
FILE NO. 9434251
JOB NO. 9434

LEGAL DESCRIPTION
MARSH LANDING TOWNHOUSE CONDOMINIUM VIII

A portion of Tract C, "MARSH LANDING" as recorded in Plat Book 58 at Page 42 of the Public Records of Lee County, Florida, being more particularly described as follows:

COMMENCE at the Northeast Corner of said Tract C; thence along the Easterly boundary of said Tract C, S06°41'21"E a distance of 541.76 feet; thence S34°31'30"W a distance of 463.96 feet to the POINT OF BEGINNING; thence S53°29'03"E a distance of 2.93 feet to a point of curvature of a circular curve concave to the Southwest; thence Southeasterly along the arc of said curve having for its elements a radius of 163.00 feet, a central angle of 28°05'04", an arc distance of 79.90 feet, a chord distance of 79.10 feet and a chord bearing of S39°26'32"E to a point of tangency; thence S25°24'00"E a distance of 87.46 feet; to a point of curvature of a circular curve concave to the Northeast; thence Southeasterly along the arc of said curve having for its elements a radius of 224.00 feet, a central angle of 16°47'16", an arc distance of 65.63 feet, a chord distance of 65.40 feet and a chord bearing of S33°47'38"E to a point of tangency; thence S42°11'15"E a distance of 62.52 feet; thence S47°48'45"W a distance of 107.78 feet; thence N43°37'48"W a distance of 13.30 feet to a point of curvature of a circular curve concave to the Northeast; thence Northwesterly along the arc of said curve having for its elements a radius of 80.00 feet, a central angle of 16°04'18", an arc distance of 22.44 feet, a chord distance of 22.37 feet and a chord bearing of N35°35'39"W to a point of tangency; thence N27°33'30"W a distance of 200.66 feet to a point of curvature of a circular curve concave to the Southwest; thence Northwesterly along the arc of said curve having for its elements a radius of 120.00 feet, a central angle of 21°41'30", an arc distance of 45.43 feet, a chord distance of 45.16 feet and a chord bearing of N38°24'15"W to a point of tangency; thence N49°15'00"W a distance of 6.90 feet; thence N40°45'00"E a distance of 91.45 feet to the POINT OF BEGINNING.

Containing 27,503.711 square feet, more or less.