

33.00P

RECORDED BY
DENISE SENY, D.C.

AMENDMENT TO CONDOMINIUM DECLARATION
OF MARSH LANDING TOWNHOUSE CONDOMINIUM IX

OR3134 PG2690

4660161

This Amendment to that certain Condominium Declaration for Marsh Landing Townhouse Condominium IX, as recorded in O.R. Book 3088, Pages 2854 thru 2907, Public Records of Lee County, Florida, is made to show the completion of Building 28 and all attendant common elements as set forth on the attached surveyor's certificate for said Building 28.

In all other respects, the Condominium Declaration, as previously recorded, remains in full force and effect and unchanged.

IN WITNESS WHEREOF, the undersigned Developer has caused this Amendment to Condominium Declaration of Marsh Landing Townhouse Condominium IX to be executed by its duly authorized officer this 21st day of June, 1999.

WITNESS:

DEVELOPER: ROTTLUND HOMES OF
FLORIDA, INC., a Minnesota corporation

Beth Kittles

By [Signature]
Its [Signature] President

Beth Kittles

Colette M. Geyer
Colette M. Geyer
STATE OF FLORIDA
COUNTY OF LEE

The foregoing instrument was acknowledged before me this 21st day of June, 1999, by Billie B. Adcock, Vice President of Rottlund Homes of Florida, Inc., a Minnesota corporation, on behalf of the corporation. He/she is personally known to me.

[Signature]
Notary Public, State of Florida
Print Name KAREN YATES
My commission:

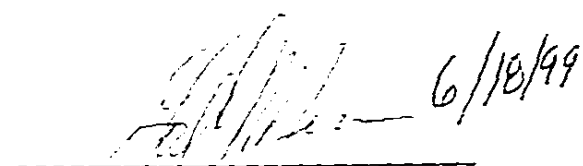
OFFICIAL NOTARY SEAL
KAREN YATES
NOTARY PUBLIC STATE OF FLORIDA
COMMISSION NO. CC714104
MY COMMISSION EXP. MAR. 1, 2002

MARSH LANDING TOWNHOUSE CONDOMINIUM IX

SURVEY CERTIFICATION

We hereby certify pursuant to section 718.104(4)(e) F.S. as amended that the construction of Building 28, and the common element facilities serving Building 28 including, but not limited to, landscaping, utility services and access to the unit are substantially complete; so that such material together with the provisions of the Declaration of Condominium of Marsh Landing Townhouse Condominium IX describing the condominium property is an accurate representation of the location and dimensions of the improvements and that the identification, location and dimensions of the common elements and of each home can be determined from these materials.

INK ENGINEERING, INC.



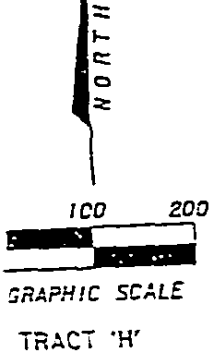
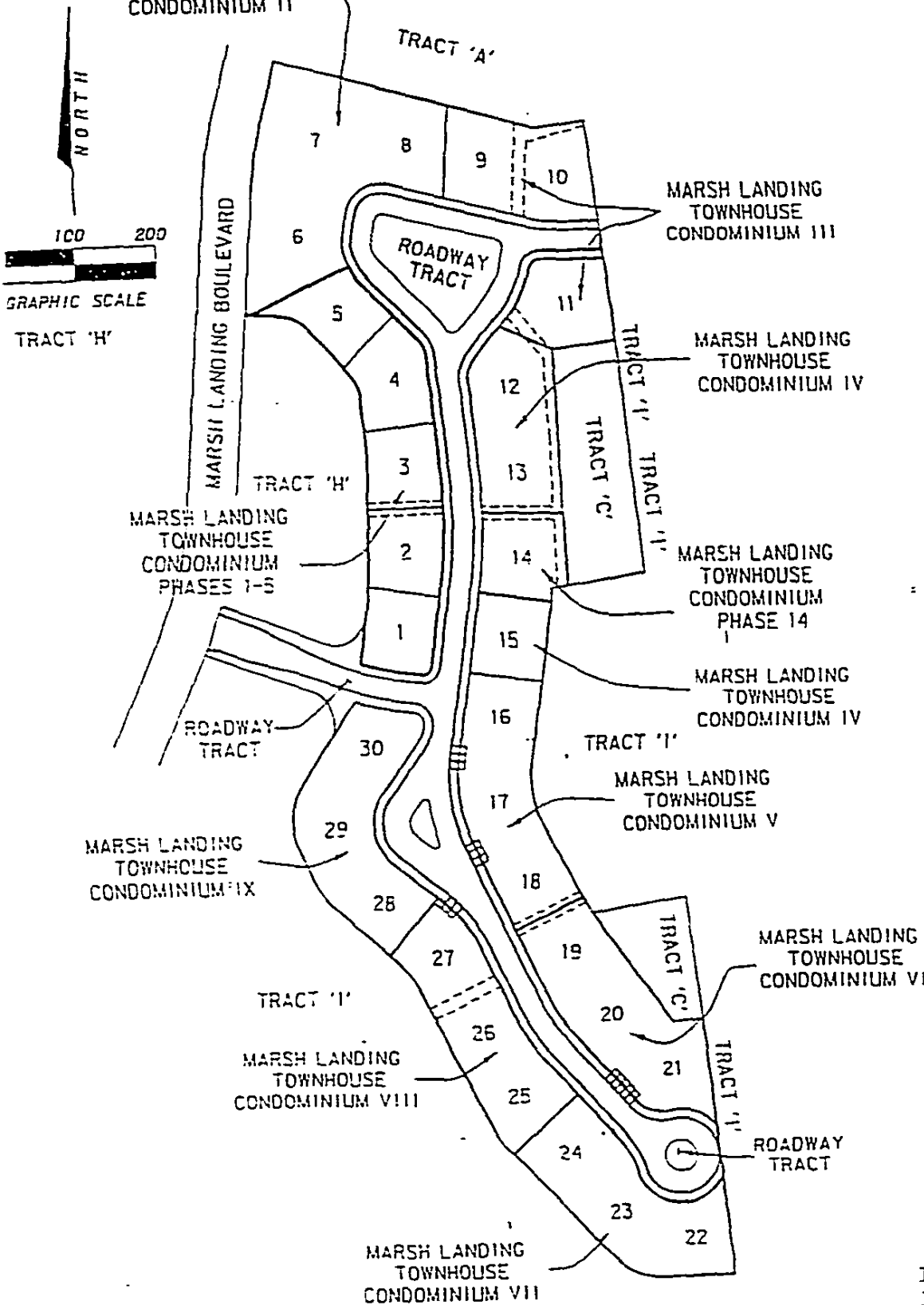
Gordon D. Meiers, P.E., P.S.M.
Professional Land Surveyor #2858
State of Florida

MARSH LANDING TOWNHOUSE CONDOMINIUM

MARSH LANDING TOWNHOUSE CONDOMINIUM II

JUNE 1987

OR3134 PG2692



Ink Engineering, Inc.
 3600 Central Ave., #8
 Fort Myers, Fl 33901

Location Map

LEGAL DESCRIPTION
MARSH LANDING TOWNHOUSE CONDOMINIUM IX

A portion of Tract C, "MARSH LANDING" as recorded in Plat Book 58 at Page 42 of the Public Records of Lee County, Florida, being more particularly described as follows:

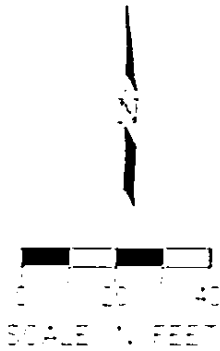
COMMENCE at the Northeast Corner of said Tract C; thence along the Easterly boundary of said Tract C, S06°41'21"E a distance of 541.76 feet; thence S67°28'12"W a distance of 391.40 feet to the POINT OF BEGINNING; said point lying on the arc of a non-tangent circular curve concave to the Northeast; thence Southeasterly along the arc of said curve having for its elements a radius of 324.00 feet, a central angle of 08°03'40", an arc distance of 45.58 feet, a chord distance of 45.55 feet and a chord bearing of S78°12'13"E to a point of tangency; thence S82°14'03"E a distance of 30.09 feet to a point of curvature of a circular curve concave to the Southwest; thence Southeasterly along the arc of said curve having for its elements a radius of 13.00 feet, a central angle of 93°36'56", an arc distance of 21.24 feet, a chord distance of 18.96 feet and a chord bearing of S35°25'35"E to a point of compound curvature of a circular curve concave to the Northwest; thence Southwesterly along the arc of said curve having for its elements a radius of 63.00 feet, a central angle of 25°08'04", an arc distance of 27.64 feet, a chord distance of 27.42 feet and a chord bearing of S23°56'55"W to a point of tangency; thence S36°30'57"W a distance of 68.91 feet to a point of curvature of a circular curve concave to the Southeast; thence Southwesterly along the arc of said curve having for its elements a radius of 60.00 feet, a central angle of 90°00'00", an arc distance of 94.25 feet, a chord distance of 84.85 feet and a chord bearing of S89°29'03"E to a point of tangency; thence S53°29'03"E a distance of 65.69 feet; thence S40°45'00"W a distance of 91.45 feet; thence N49°15'00"W a distance of 92.17 feet to a point of curvature of a circular curve concave to the Northeast; thence Northwesterly along the arc of said curve having for its elements a radius of 80.00 feet, a central angle of 22°27'42", an arc distance of 31.36 feet, a chord distance of 31.16 feet and a chord bearing of N38°01'09"W to a point of tangency; thence N26°47'18"W a distance of 43.65 feet to a point of curvature of a circular curve concave to the East; thence Northerly along the arc of said curve having for its elements a radius of 80.00 feet, a central angle of 60°28'47", an arc distance of 84.45 feet, a chord distance of 80.58 feet and a chord bearing of N03°27'06"E to a point of tangency; thence N33°41'29"E a distance of 117.12 feet to the POINT OF BEGINNING.

Containing 28894.320 square feet, more or less.

OR3134 P62693

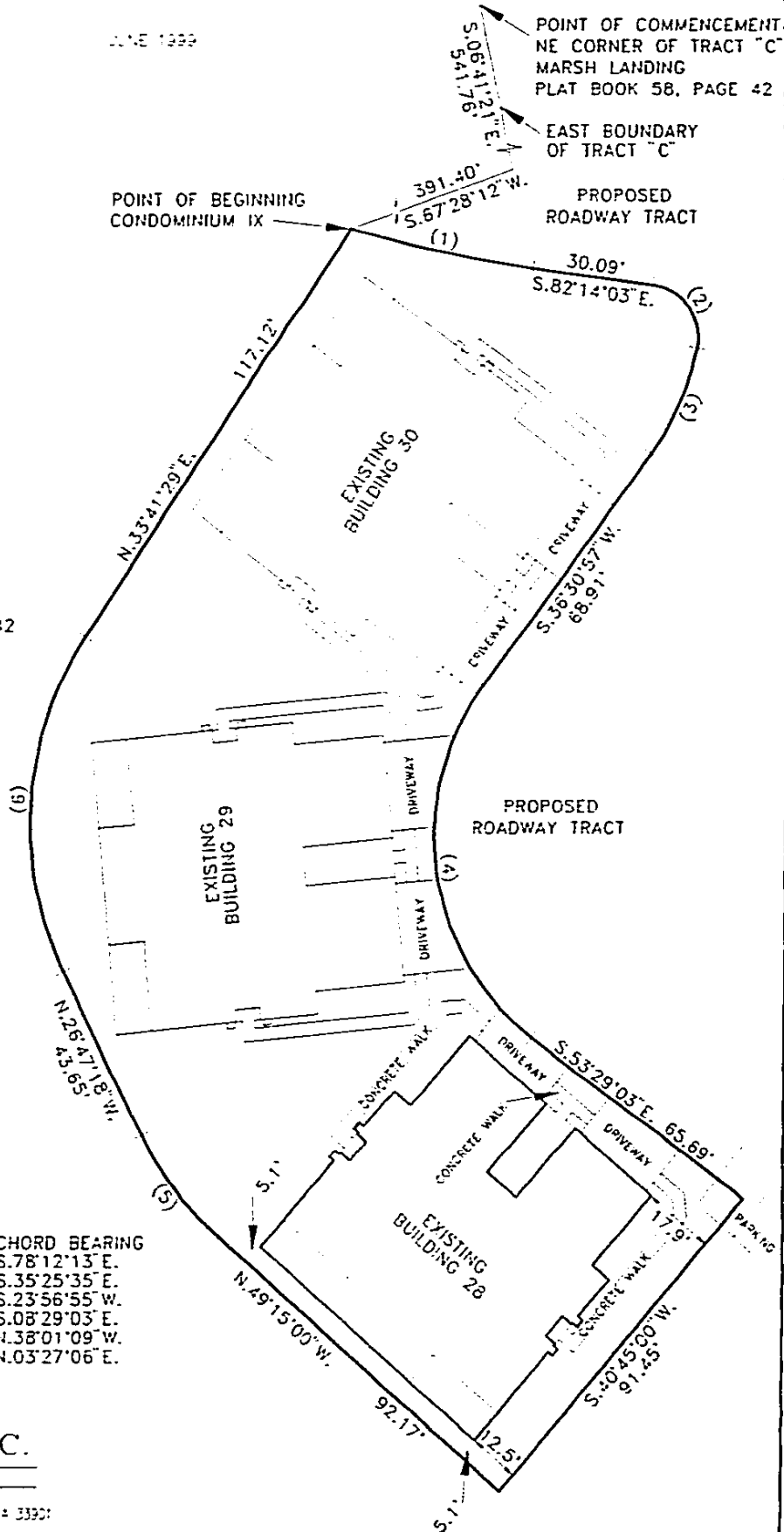
MARSH LANDING TOWNHOUSE CONDOMINIUM IX

JUNE 1999



083131-052691

TRACT "I"
MARSH LANDING
PLAT BOOK 58, PAGE 42



CURVE TABLE

| NO. | RADIUS | DELTA | ARC | CHORD | CHORD BEARING |
|-----|---------|-----------|--------|--------|----------------|
| 1 | 324.00' | 08°03'40" | 45.58' | 45.55' | S.78°12'13" E. |
| 2 | 13.00' | 93°36'56" | 21.24' | 18.96' | S.35°25'35" E. |
| 3 | 63.00' | 25°08'04" | 27.64' | 27.42' | S.23°56'55" W. |
| 4 | 60.00' | 90°00'00" | 94.25' | 84.85' | S.08°29'03" E. |
| 5 | 80.00' | 22°27'42" | 31.35' | 31.16' | N.38°01'09" W. |
| 6 | 80.00' | 60°28'47" | 84.45' | 80.58' | N.03°27'06" E. |

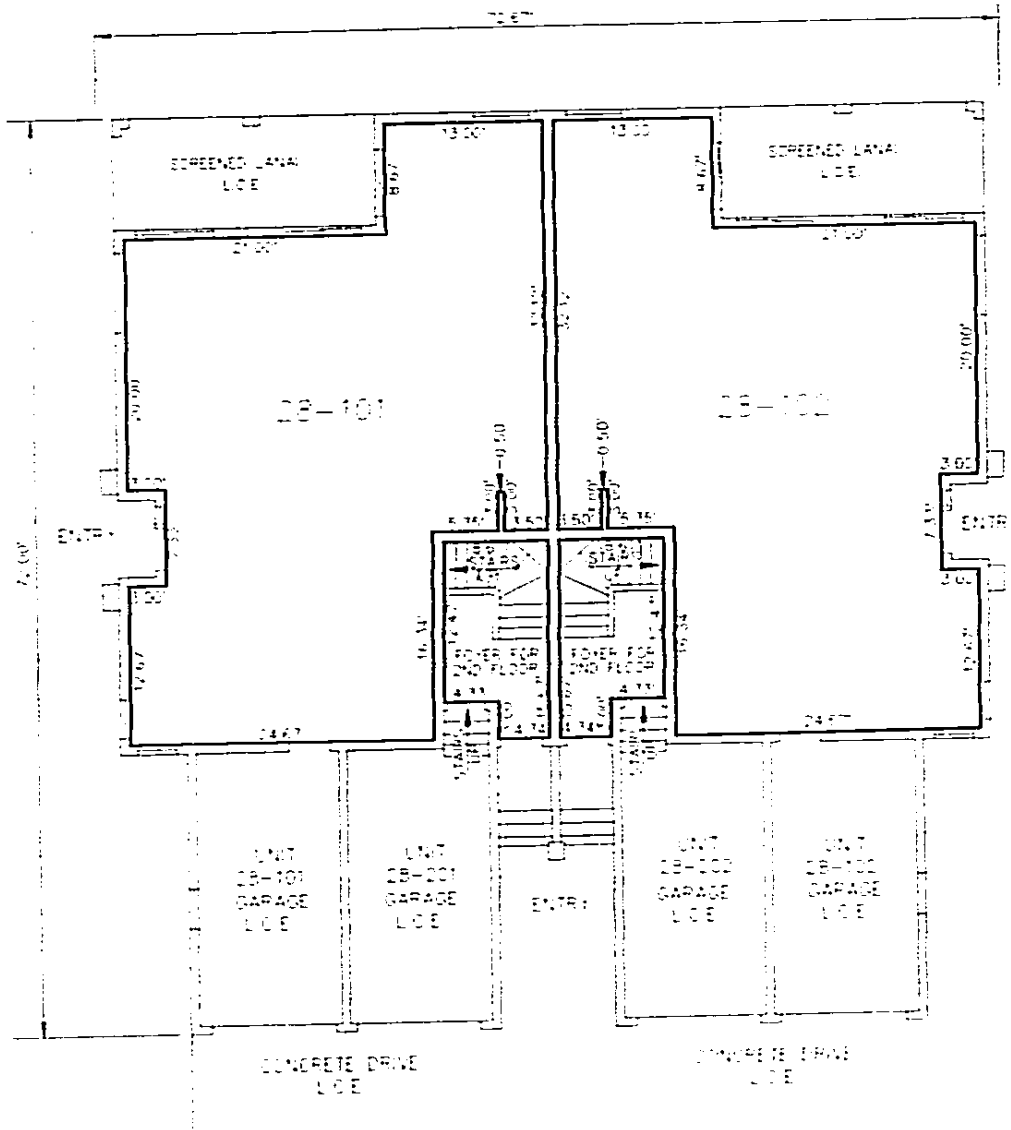
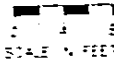
INK ENGINEERING, INC.

ENGINEERS SURVEYORS PLANNERS
LB 558

(941) 931-0455 3660 CENTRAL AVE., SUITE E, FT. MYERS, FLORIDA 33901

MARSH LANDING TOWNHOUSE CONDOMINIUM IX

JUNE 1999



BUILDING - FIRST FLOOR

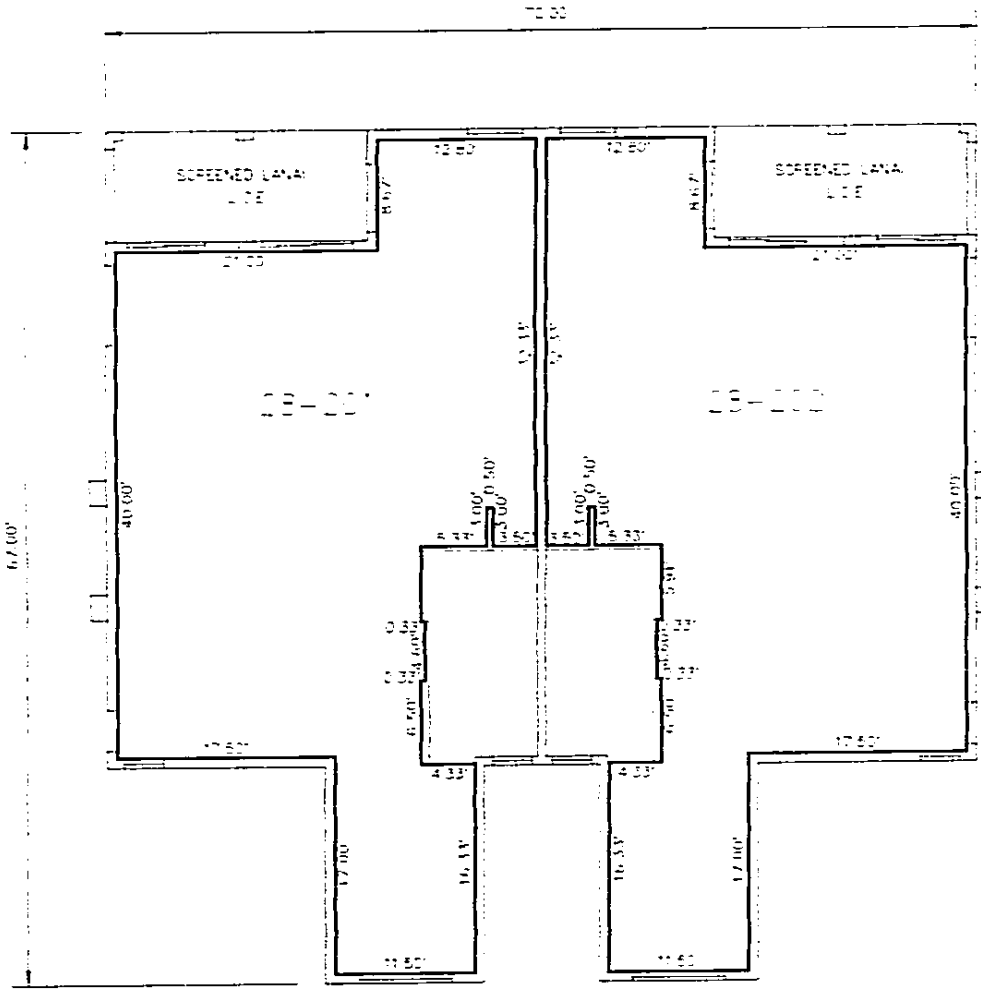
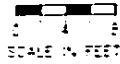
| UNIT | UNIT | UNIT | UNIT | UNIT | UNIT | UNIT |
|--------|--------|--------|--------|--------|--------|--------|
| 10-101 | 09-101 | 08-101 | 08-102 | 09-102 | 09-101 | 09-102 |
| 24.00' | 24.00' | 24.00' | 24.00' | 24.00' | 24.00' | 24.00' |
| 10.00' | 10.00' | 10.00' | 10.00' | 10.00' | 10.00' | 10.00' |

INK ENGINEERING, INC.
 ENGINEERS ARCHITECTS PLANNERS
 1800 N. W. 10th Ave., Suite 100, Ft. Lauderdale, Florida 33304
 PHONE: (954) 571-1111 FAX: (954) 571-1112

DR3134 P62695

MARSH LANDING TOWNHOUSE CONDOMINIUM IX

JUNE 1999



BUILDING 09 SECOND FLOOR

| | UNIT | UNIT |
|---------------|--------|--------|
| | 09-201 | 09-102 |
| UPPER L.W.T.S | 36.00 | 36.00 |
| LOWER L.W.T.S | 36.00 | 36.00 |

INK ENGINEERING, INC.

ENGINEERS SUPERVISORS PLANNERS

LB 856

(341) 831-2435 3660 CENTRAL AVE., SUITE B, FT. WALTER, FLORIDA 33607

DR3134 P62696

CHARLIE GREEN, CLERK
LEE COUNTY, FL
1999 JUN 22 PM 3:39